

## Purge-it! E1

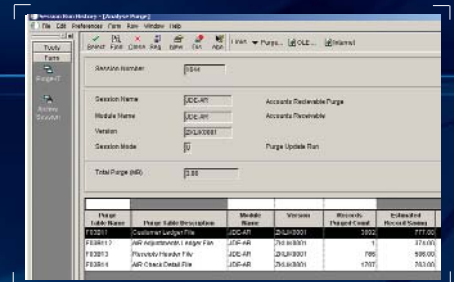
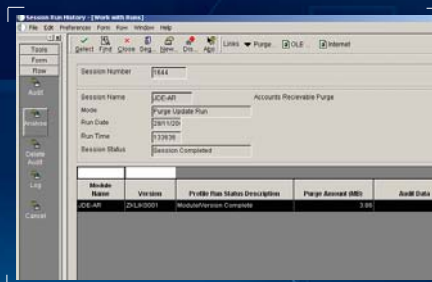
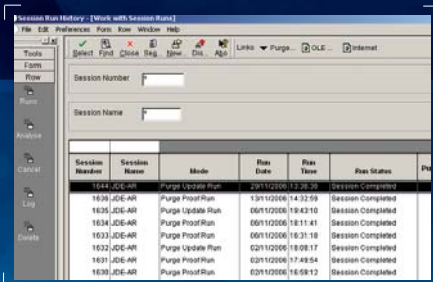


Need to **purge** & archive  
your JD Edwards system?  
**Purge-it!** from Klik IT the only  
solution you need

- The only product available that works with both World and EnterpriseOne on all platforms
- Modules available for all the main application areas in JD Edwards
- All purges can run during the working day. No need to schedule out of hours purging activities
- Easy to configure and use
- Full History and Audit trail of all your purging activities
- One job does everything. No fiddling around with supplemental tasks on data selection or summarisation
- Uses commitment control to ensure data integrity is always maintained
- Runs in Proof or Update modes
- Developed by Oracle Certified Partners and long time JD Edwards Consultancy

- FULLY INTEGRATED INTO YOUR JD EDWARDS ENTERPRISEONE SYSTEM
- EASY ACCESS TO ARCHIVED DATA
- MAINTAINS DATA INTEGRITY
- PROOF OR UPDATE
- EASY START AND STOP
- SAFE AND RELIABLE
- SHIPPED AS STANDARD ASU
- LOW IMPLEMENTATION COSTS

# Purge-it! E1



The only purge and archive solution for EnterpriseOne that is fully integrated into your EnterpriseOne system. Purge-it! E1 is a natural evolution of Klik IT's Purge-it! iSeries solution and incorporates all the functionality available in that product. Due to its integration into JD Edwards, Purge-it! is the easiest to use product available on the market and therefore has the lowest cost of implementation.

## Purge-it! Modules

Currently Purge-it! E1 is available in the following modules:

- General Ledger
- Accounts Receivable
- Accounts Payable

## Further releases include modules for:

- Sales Order Processing
- Inventory
- Purchase Order Processing
- Manufacturing

Each Purge-it! module runs as a standard UBE and comes pre-configured with standard versions to help users get started. You can create your own new versions or just run the supplied ones. Varying degrees of validation and data selection can be configured to alter the effectiveness of the purge.

All Purge-it! modules are individually shipped and licensed. Therefore you only need to purchase the modules that you wish to install and run.

“organised into  
easy-to-manage  
Sessions”

## Purge-it! Sessions

Purging runs are organised into easy-to-manage ‘sessions’. Purge-it! sessions can contain a schedule that consists of one or more Purge-it! UBE and version combinations to be run. Alternatively Purge-it! UBEs can be submitted directly from batch versions.

Every session can be analysed and audited on-line using intuitive session management applications. Session or Purge-it! run information will be reported back to the purge session and all results and audit information will be accessible from the Work with Session Runs application. The session history ensures a complete record of purge runs is maintained for audit purposes.

## Purge-it! Archive Applications

Data is purged from your JD Edwards tables and placed in Purge-it! archive tables within your application. These tables can be off-lined and restored as required, or you can simply leave the data in the archive tables to allow on-going archive access.

Each Purge-it! module has a full suite of archive applications enabling access to the archive data through the standard JD Edwards application interface. This means that the archive data is easily accessible to any users you wish to grant access to after the purge process is complete.

Access to archive data can be through your existing path code or alternatively use the power of JD Edwards’ flexible configuration to allow data to be archived directly to an alternative server with future access maintained through alternative path codes or environments.

## Purge-it! Audit Data

All Purge-it! runs produce audit data whether the purge is in proof or update mode. This audit data is extremely valuable when analysing the purge results and will help when refining the purge criteria. The power to analyse purge runs for data purged and also for data excluded from purging due to exception conditions is available through the Work with Audit Data application.

The Work with Audit Data application allows for the display of all purged transactions.

The Work with Audit Data application also allows for the display of all excluded transactions. Details of the excluded transaction can be viewed showing the application reason why the transaction could not be purged.

## Low Implementation Costs

As Purge-it! is fully integrated into your EnterpriseOne application it could not be simpler to use. Installation is easy as Purge-it! is shipped as an ASU. Once installed no further package training is required due to all interfaces being maintained through JD Edwards style application windows.

*Purge-it! empowers you with the ability to purge. The only question you have to ask yourself is what data you want to get rid of, how to do it, is simple!*

**General** | Selections | Modular Validations

- Enter 'U' to run in Update Mode. Enter 'P' or any other value to run in Proof mode.
- Enter '1' to show all exclusions for each batch that will stop it from being purged. Leave blank to check for first exclusion and continue with the next batch.
- Enter level of batch relationship validation to be performed by the purge.
- Enter '1' to Validate Batch Header.

Session Run History - [Work with Batch Session Exceptions by Type]

Session Number: 1644  
Module Name: JDEAR - Accounts Receivable  
Version: 24.8.0001

AR Error Code	Error Code Description	AR Error Count
Y1550001	Batch not found on Batch Control	4
Y1550002	Batch has not been posted	9
Y1550006	Trans in batch have not been p	2
Y1550007	Batch has no transactions	350

Page 11 of 11 - Audit Data - [Work with Audit Data Application]

Doc	Doc Date	Doc Type	Doc Ck	Doc No	Batch	Doc Date	Doc Ck	Doc No	Doc Date	Doc Ck	Doc No	Doc Date	Doc Ck	Doc No
11	11/01	0001	001	00000001		11/01	0001	001	00000001		11/01	0001	001	00000001
11	11/01	0001	001	00000001		11/01	0001	001	00000001		11/01	0001	001	00000001

# Key Facts

- Purge-it! uses commitment control to organise transactions into logical groups for update. This means that at no time will you get partly purged data and orphaned records as a result of an incomplete purge
- Purges can be run in Proof or Update modes
- Full on-line help is available, both Purge-it! and JD Edwards specific
- Purge runs can be stopped and restarted under the users control with no effect on the purge results
- The purge process can be run during the online day whilst users access the system
- Retained database integrity is built into the system giving maximum protection. Some options are override-able but fundamental decisions on integrity are not.
- No technical knowledge of the JD Edwards database and table relationships is required to use Purge-it!

“the UK’s leading  
developer/supplier of purging  
software for JD Edwards”

## About Klik IT

Since 1998, Klik IT has provided consultancy, development, and support services to users of JD Edwards. Based in the UK but with clients worldwide, Klik IT strives to provide the highest level of quality in all its products and services. By working hand in hand with our clients we have accumulated an enviable level of knowledge and expertise and our clients include some of the largest users of JD Edwards in the world.

## Purging Specialists

Klik are an established Oracle Certified Partner. Our partnership specifically targets our complimentary JD Edwards toolsets of which Purge-it! is one. We are the leading developer/supplier of purging software for JD Edwards in the UK and since developing the Purge-it! software solution have implemented it in many companies both in the UK and overseas.

## Purging Services

If you need to purge but feel that you do not have the in-house expertise or time to run a purging project then Klik IT’s Purging Services might be the solution for you. No outright product purchase is required if you choose to take this service. Please see our related leaflet on ‘Klik IT Purging Services’ for further information.



**TST Consulting Inc.**  
431 Ohio Pike Ste 206 S. • Cincinnati • Ohio 45255-4229

**Telephone: 513-388-9222 Facsimile: 866-683-9445**  
**E-mail: [bonnie.murphy@tstconsulting.biz](mailto:bonnie.murphy@tstconsulting.biz)**



[www.klik-it.co.uk](http://www.klik-it.co.uk)